



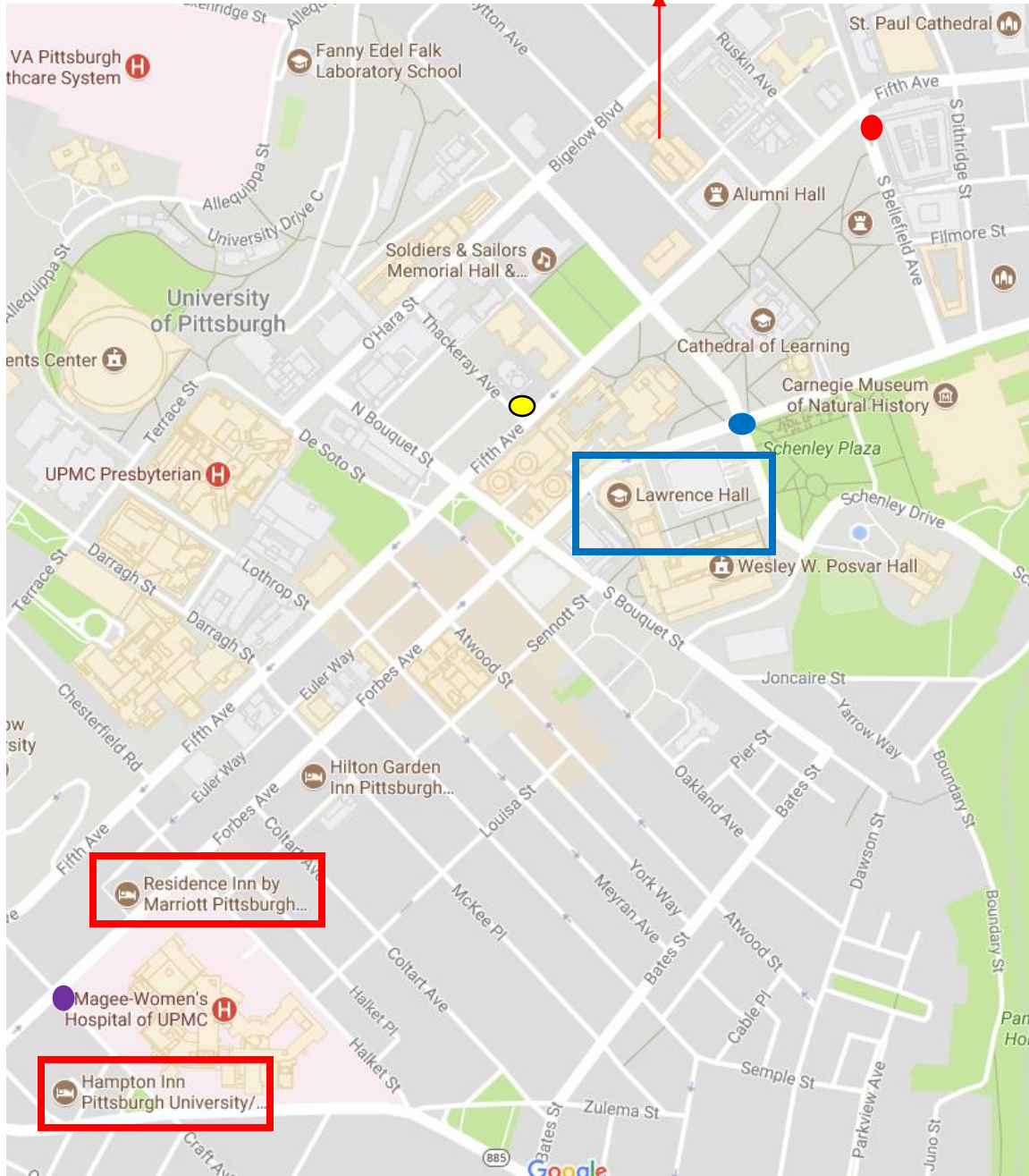
**MID-WEST MACROECONOMICS
MEETING - November 3-5, 2017**



Conference Brochure

The Big Picture: Map of Conference Places

Wyndham Pittsburgh
University Center



Transportation From/To the Airport

Pittsburgh's International Airport is located about 20 miles away from the University of Pittsburgh's campus.

A car ride from the airport to the campus area (where the hotels are located) takes about 25 minutes with little traffic and longer at rush hours. A taxi might charge you about \$60 for the ride, while Uber/Lyft might cost you about \$35-\$40.

By far, the cheapest way to get to campus from the airport (and back) is by bus. There is a convenient bus – the 28X – that connects the airport to the university area (Oakland) and back. [Click here](#) for the schedule of the 28X. It departs every 30 minutes and takes about 1 hour to reach campus. The ride costs \$2.75 one way and you need to have exact change.

If you are taking the 28X bus from the airport get off at (see page 3 map):

1. “Forbes Avenue past Craft Avenue” if you are staying at the Hampton Inn or the Residence Inn (denoted by ● on the map).
2. “Bellefield Avenue and Fifth” if you are staying at the Wyndham Hotel (denoted by ● on the map).
3. “Forbes at Schenley Drive” if you are going directly to the conference at David Lawrence Hall (denoted by ● on the map).

On the way back from the University of Pittsburgh's campus to the airport there is a bus stop located across from David Lawrence Hall on Fifth Avenue (not Forbes) at “Fifth and Thackeray Avenue” (denoted by ● on the map).

Conference Hotels and Directions to David Lawrence Hall

[Hampton Inn University/Medical Center](#) (3315 Hamlet St, Pittsburgh PA 15213)

To make a reservation at the conference rate [click here](#).

Reaching [David Lawrence Hall](#) (3942 Forbes Ave, Pittsburgh PA 15260) takes about 15 minutes [walking](#):

1. Head southeast toward Hamlet St.
2. Turn left onto Hamlet St.
3. Turn left onto Craft St.
4. Turn right onto Forbes Ave. Walk on Forbes in direction NE for 0.6 miles and you will find David Lawrence Hall on the right.

[Wyndham Pittsburgh University Center](#) (100 Lytton Ave, Pittsburgh PA 15213)

To make a reservation at the conference rate [click here](#).

Reaching [David Lawrence Hall](#) takes about 5-10 minutes [walking](#):

1. Head SE on Lytton Ave toward Fifth Ave.
2. Turn right onto Fifth Avenue.
3. Turn left onto Bigelow Boulevard.
4. Turn right on Forbes Ave. Walk a block on Forbes till you will find David Lawrence Hall on your left.

[Residence Inn Pittsburgh Oakland University Place](#) (3341 Forbes Avenue, Pittsburgh PA 15213)

To make a reservation at the conference rate [click here](#).

Reaching [David Lawrence Hall](#) takes about 10 minutes [walking](#):

1. Head SE toward Forbes Ave.
2. Turn left onto Forbes Avenue. Walk 0.5 miles till you will find David Lawrence Hall on your right.

Conference Agenda ([click here](#))

Friday, November 3rd 2017

1:00 pm	Registration opens	DLH lobby
2:15 pm – 3:45 pm	Parallel Sessions	DLH room details here
3:45 pm – 4:15 pm	Coffee Break	DLH lobby
4:15 pm – 5:45 pm	Parallel Sessions	DLH room details here
6:00 pm – 7:00 pm	Plenary Session (Gabaix)	DLH Auditorium 120
7:15 pm – 9:00 pm	Welcome Dinner	Wyndham Pittsburgh University Center

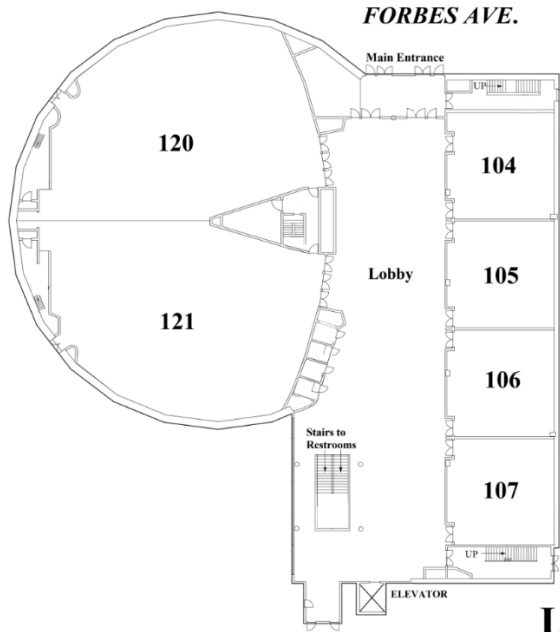
Saturday, November 4th 2017

9:00 am – 10:30 am	Parallel Sessions	DLH room details here
10:30 am – 11:00 am	Coffee Break	DLH lobby
11:00 am – 12:30 pm	Parallel Sessions	DLH room details here
12:30 pm – 2:00 pm	Lunch	William Pitt Union
2:00 pm – 3:30 pm	Parallel Sessions	DLH room details here
3:30 pm – 4:00 pm	Coffee Break	DLH lobby
4:00 pm – 5:30 pm	Parallel Sessions	DLH room details here
5:45 pm – 6:45 pm	Plenary Session (Krueger)	DLH Auditorium 120
7:00 pm – 9:00 pm	Conference Dinner	Wyndham Pittsburgh University Center

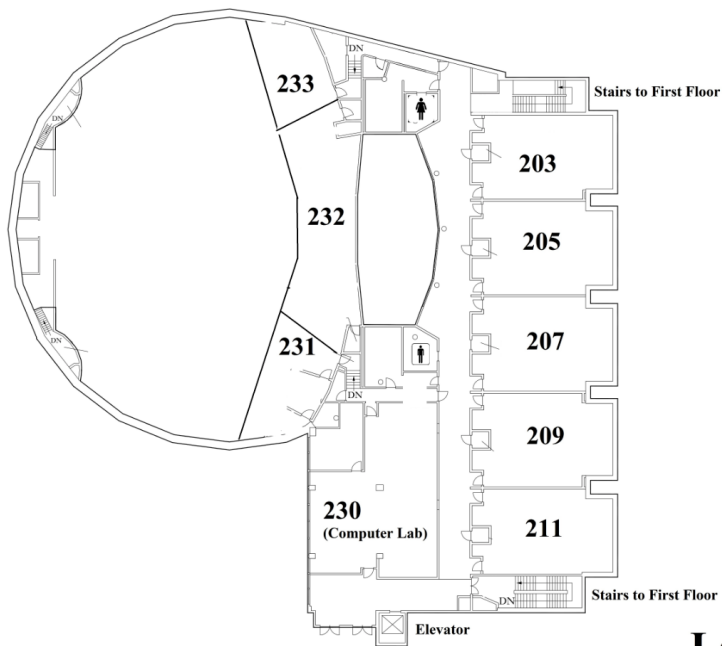
Sunday, November 5th 2017

9:00 am – 10:30 am	Parallel Sessions	DLH room details here
10:30 am – 11:00 am	Coffee Break	DLH lobby
11:00 am – 12:30 pm	Parallel Sessions	DLH room details here
12:30 pm – 1:30 pm	Box lunch	DLH lobby

Floor Plan of David Lawrence Hall



Lawrence Hall
First Floor



Lawrence Hall
Second Floor

Useful Information

Wifi Access: if your university is part of **eduroam**, you will be able to log on to the University of Pittsburgh's eduroam network. For those who do not have eduroam access, please contact the conference organizers ahead of time in order to arrange for individual access to the network.

Parking on campus: if you are driving to Pittsburgh and staying at a hotel in Oakland you should probably leave your car at the hotel and walk to the University. There are some visitor parking lots on campus, [click here](#) for a map, opening hours, and rates. Notice that the O'Hara garage is not open during the week-ends. Also, notice that there is metered street parking in Oakland.

Local Attractions

The University of Pittsburgh is located in the Oakland neighborhood of the city.

Oakland is home to some of Pittsburgh's most important cultural institutions, such as the [Carnegie Museum of Natural History](#), the [Carnegie Museum of Art](#), and [Phipps Botanical Garden](#).

Oakland is also home of the Cathedral of Learning, the skyscraper in the middle of campus (see brochure front photo), notable for its [nationality rooms](#).

Finally, in Oakland you will find the beautiful [Schenley Park](#), a large city park where you can jog, walk, and bike. Most of these places can be reached by foot in 10-15 minutes from the conference hotels.

Pittsburgh has many other attractions but you will need a car or bus ride to reach them.

Among the most notable are [Point State Park](#) (downtown), the original site of the city, where the Monongahela and the Allegheny rivers meet to form the Ohio river.

On the South side of the Monongahela you will find the [Duquesne](#) and [Monongahela](#) inclines which take you to the top of the southern hills offering spectacular views on downtown and the area.

On the North side of the city you will find the [Carnegie Science Center](#), the [National Aviary](#), and the [Children's Museum of Pittsburgh](#), in addition to the baseball and football stadiums.

Conference Organizers and Contacts

Conference Program Organizers

[Marla Ripoll](#) (co-chair)

University of Pittsburgh, Department of Economics

Email: ripoll@pitt.edu

Phone: (412) 651-1200

[Daniele Coen-Pirani](#) (co-chair)

University of Pittsburgh, Department of Economics

Email: coen@pitt.edu

Phone: (412) 651-2480

Conference Program Committee Members

[Stefania Albanesi](#) – University of Pittsburgh, Department of Economics

[David Childers](#) – Carnegie Mellon University, Tepper School of Business

[Douglas Hanley](#) – University of Pittsburgh, Department of Economics

[Sewon Hur](#) – University of Pittsburgh, Department of Economics

[Shu Lin Wee](#) – Carnegie Mellon University, Tepper School of Business

Keynote Speakers



[Xavier Gabaix](#)
Harvard University



[Dirk Krueger](#)
University of Pennsylvania

Acknowledgements

The conference organizers would like to thank the University of Pittsburgh's Dietrich School of Arts and Science, Graduate Studies Office, for generous financial support through the Faculty Research and Scholarship Program.

Thanks to the following people at the University of Pittsburgh for their invaluable help:

Dave DeJong – Executive Vice Provost

Lise Vesterlund – Chair, Department of Economics

Linda Howard – Social Science Division Administrator

Debbie Ziolkowski – Event Coordinator

Georgia Spears – Department Coordinator

Gene Vercammen – System Analyst

Pat McGrane – Communications Manager, Dietrich School

Marta Bozcon – Student volunteer

Jialin Hou – Student volunteer

Jessica LaVoice – Student volunteer

Yuriy Podvysotskiy – Student volunteer

Lhakpa Sherpa – Student volunteer

Domi Vamossy – Student volunteer

Lucy Wang – Student volunteer

Siqiang Yang – Student volunteer

Ning Zhang – Student volunteer

Conference Participants

Elena Afanasyeva
Federal Reserve Board

Marco Airaud
Drexel University, LeBow Business School

Laurence Ales
Carnegie Mellon University

Marnix Amand
Yale University

Diego Anzoategui
Rutgers University

Marcelo Arbex
University of Windsor

Sangmin Aum
Washington University in St. Louis

Shantanu Bagchi
Towson University

Yaniv Ben-Ami
Carleton College

Craig Benedict
SUNY Oswego

Pedro Bento
Texas A&M University

Mostafa Beshkar
Indiana University

Anmol P Bhandari University of Minnesota
Marius Bickmann TU Dortmund
Adam Blandin Virginia Commonwealth University
Marta Boczon University of Pittsburgh
Martin R Bodenstein Federal Reserve Board
Marco Brianti Boston College
Benjamin Bridgman U.S. Bureau of Economic Analysis
Jacklyn Buhrmann Purdue University
Christian Bustamante Ohio State University
Matteo Cacciatore HEC Montreal
Lorenzo Caliendo Yale University
Dan Vu Cao Georgetown University
Daniel R Carroll Federal Reserve Bank of Cleveland
Santanu Chatterjee University of Georgia

Gaston Rene Chaumont
Pennsylvania State University

Chaoran Chen
National University of Singapore

Dong Cheng
Vanderbilt University

David Choi
Harvard Business School

Sanjay K. Chugh
The Ohio State University

Gian Luca Clementi
Stern School of Business

Daniele Coen-Pirani
University of Pittsburgh

Juan Carlos Cordoba
Iowa State University

Mario J. Crucini
Vanderbilt University

German Cubas
University of Houston

David Cuberes
Clark University

Pablo Nicolas D'Erasmus
FRB Philadelphia

Eva De Francisco
CBO

David DeJong
University of Pittsburgh

Francois de Soyres World Bank
Anthony Diercks Federal Reserve Board of Governors
Mikhail Dmitriev Florida State University
Taeyoung Doh Economic Research Dept.
Ross Doppelt Carnegie Mellon & Penn State
Thorsten Drautzburg Federal Reserve Bank of Philadelphia
Maximiliano Dvorkin Federal Reserve Bank of St. Louis
Brendan Epstein University of Massachusetts, Lowell
Burcu Eyigungor Federal Reserve Bank of Philadelphia
James Allen Feigenbaum Utah State University
Ying Feng University of California, San Diego
Andres Fernandez Inter-American Development Bank
Andrew Foerster Federal Reserve Bank of Kansas City
Paul Gaggl University of North Carolina, Charlotte

Yin Germaschewski University of New Hampshire
Thanasis Geromichalos UC Davis
Soroush Ghazi Duke University
Andy Glover University of Texas Austin
Grey Gordon Indiana University
Nils Mattis Gornemann International Finance Board of Governors
Christoph Görtz University of Birmingham
Ben Griffy University of California, Santa Barbara
Junjie Guo Indiana University
Nick Lei Guo University of Wisconsin, Whitewater
Douglas Hanley University of Pittsburgh
Sebastian Heise Federal Reserve Bank of New York
Lutz Hendricks UNC Chapel Hill
Rodrigo Heresi University of Maryland

Kyle F. Herkenhoff University of Minnesota
Juan Manuel Hernandez Inter-American Development Bank
Trenton Herriford Federal Reserve Bank of Kansas City
Nicholas Hoffman Federal Reserve Bank of Cleveland
Roosbeh Hosseini University of Georgia
Jialin Hou University of Pittsburgh
Sewon Hur University of Pittsburgh
Ayse Imrohoroglu USC
Yuko Imura Bank of Canada
Youngsoo Jang Shanghai University of Finance and Economics
Dennis Jansen Texas A&M University
Minhyeon Jeong Washington University in St. Louis
Helu Jiang Washington University in St. Louis
Kenneth L. Judd Hoover Institution

Zeynep Sefika Kabukcuoglu Villanova University
Kee-Youn Kang Yonsei University
Marek Kapicka CERGE-EI
Lorena Keller Northwestern University
Aubhik Khan Ohio State University
Eungsik Kim Carnegie Mellon University
Heejeong Kim Concordia University
Matthew Klepacz College of William and Mary
Dongya Koh University of Arkansas
Alexandr Kopytov Wharton School
Christopher Krause Karlsruhe Institute of Technology
Jonathan Kreamer Florida State University
Musab Kurnaz Koc University
Yoshinori Kurokawa University of Tsukuba

Andrea Lanteri Duke University
Tzuo Hann Law Boston College
Yue Li University at Albany, SUNY
Max Littlejohn University of California, Irvine
Igor Livshits Federal Reserve Bank of Philadelphia
Bernabe Lopez-Martin Bank of Mexico
Steven Lugauer University of Kentucky
Caio Machado Pontificia Universidad Catolica de Chile
Florian Madison University of Basel
Hidehiko Matsumoto University of Maryland
Christian Matthes Federal Reserve Bank of Richmond
Robert McDowall New York University
Gabriel Mihalache Stony Brook University
Ray Miller Harvard University

Mauro Moretto Carnegie Mellon University
Christian Moser Columbia University
Gernot Mueller University of Tuebingen
Srinivasan Murali The Ohio State University
Masaki Nakabayashi The University of Tokyo
Phuong Ngo Cleveland State University
Jaromir Bozydar Nosal Boston College
Hyunseung Oh Vanderbilt University
Christopher Otrok University of Missouri/ FRB St Louis
Hakki Ozdenoren Carnegie Mellon University
Francesco Pappadà Banque de France
Hyeon Park Manhattan College
Jongho Park Korea Development Institute
Kwangyong Park Indiana University

Yena Park University of Rochester
Matthias Paustian Federal Reserve Board
Thomas Phelan University of Minnesota
Gina Pieters Trinity University
Roberto Pinheiro Federal Reserve Bank of Cleveland
Yuriy Podvysotskiy University of Pittsburgh
Nick Pretnar Carnegie Mellon University
Stanislav Rabinovich University of North Carolina, Chapel Hill
Xavier Ragot Sciences Po
Benjamin Raymond Purdue University
Pascual Restrepo Boston University
Marla Ripoll University of Pittsburgh
Annikka Ristiniemi Sveriges Riksbank
Baxter Van Halm Robinson University of Toronto

Eugenio Rojas University of Pennsylvania
Shahar Rotberg University of Toronto
Jacek Rothert United States Naval Academy
Peter Rupert University of California, Santa Barbara
Luis Felipe Saenz University of Illinois, Urbana-Champaign
Erick Sager Bureau of Labor Statistics
Juliana Salomao University of Minnesota
Roberto M. Samaniego George Washington University
Suppaleuk Sarpphaitoon Akita International University
Alexander Scheer Deutsche Bundesbank
Simon Scheidegger University of Zurich
Lin Shao Bank of Canada
Wenyi Shen Oklahoma State University
Lhakpa Sherpa University of Pittsburgh

Michael Shin University of California, Irvine
Jacob M Short University of Western Ontario
Ali Shourideh Carnegie Mellon University
Pedro Silos Temple University
Chris Sleet Carnegie Mellon University
Michael Sockin University of Texas at Austin
Faisal Sohail Washington University in St. Louis
Michael J Sposi Federal Reserve Bank of Dallas
Joseph Steinberg University of Toronto
Kjetil Storesletten University of Oslo
Ethan Struby Carleton College
Eugene Tan Duke University
Fei Tan Saint Louis University
Chris Telmer Carnegie Mellon University

Domi Vamossy University of Pittsburgh
Lise Vesterlund University of Pittsburgh
Jessica LaVoice University of Pittsburgh
Lucy Wang University of Pittsburgh
Juan Marcos Wlasiuk Central Bank of Chile
Murat Tasci Federal Reserve Bank of Cleveland
Kevin Thom New York University
Oscar Mauricio Valencia A Central Bank of Colombia
Lukas Voellmy Study Center Gerzensee (SNB)
Liang Wang University of Hawaii Manoa
Ping Wang Washington University in St. Louis
Shu Lin Wee Carnegie Mellon University Tepper School of Business
Xin Wei Indiana University
Jonathan Wolff Miami University

Haotian Xiang Wharton
Biancen Xie Washington University in St. Louis
Jianhuan Xu Singapore Management University
Shaofeng Xu Bank of Canada
Hakki Yazici Sabanci University
Siqiang Yang University of Pittsburgh
Yao Yao Victoria University of Wellington
Chen Yeh University of Illinois at Urbana-Champaign
Sevin Yeltekin Carnegie Mellon University
Hakan Yilmazkuday Florida International University
Xiaoyan Youderian Xavier University
Margarita Zabelina University of Pittsburgh
Ariel Zetlin-Jones Carnegie Mellon University
Tao Zha Federal Reserve Bank of Atlanta

Shiyun Zhang
University of California, Riverside

Ning Zhang
University of Pittsburgh

Kai Zhao
University of Connecticut